

SAFE ENERGY DELIVERY

LIQUIDS PIPELINES

**99.999%
Safety
Record**

99.999% of crude oil and petroleum products delivered by pipeline reach their destination safely

Liquids pipeline incidents impacting people or the environment declined by 19% over the last 5 years

**Incidents
Declined
by 19%**

**10.7 Billion
Barrels
Delivered**

10.7 billion barrels of crude oil delivered by pipelines in 2016, a 43% increase from 2012

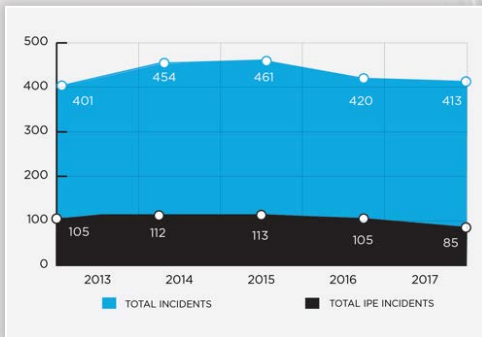
Pipeline operators use proactive inspections and preventive maintenance to find and fix issues before they become problems

**Proactive
Inspections**

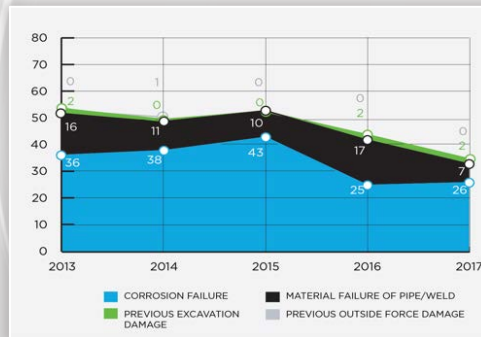
PIPELINE SAFETY PERFORMANCE

KEY PERFORMANCE INDICATORS

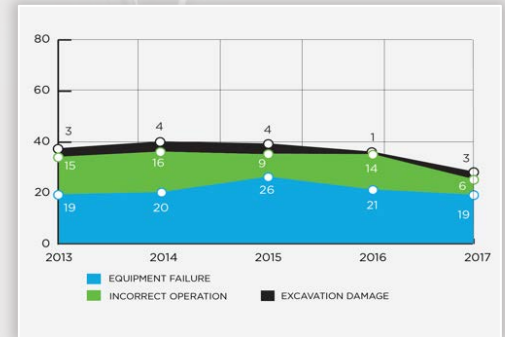
INCIDENTS IMPACTING THE PUBLIC OR ENVIRONMENT (IPE)



IPE INCIDENTS OF CORROSION, CRACKING OR PIPE FAILURE



IPE INCIDENTS OF OPERATIONS OR MAINTENANCE



-19%

Incidents impacting people or the environment are down 19% over the last 5 years

-35%

IPE incidents of corrosion, cracking or pipe failure are down 35% over the last 5 years

-24%

IPE incidents caused by operations or maintenance failures are down 24% over the last 5 years

PIPELINE SAFETY STRATEGIC GOALS

Pipeline operators through API and AOPL are working on industry-wide initiatives to:

1. Promote Organizational Excellence

Develop and promote industry-wide safety culture through continuous improvement mechanisms, such as Pipeline Safety Management Systems, Construction Quality Management and Integrity Management

2. Improve Safety through Technology and Innovation

Accelerate development and adoption of most effective in-line inspection “smart pig” tools and create improved frameworks for leak detection programs

3. Enhance Emergency Response Preparedness

Increase rapid and effective emergency response efforts through the development and adoption of industry guidance on adaptive emergency planning and response processes

4. Increase Stakeholder Awareness & Engagement

Share with the public how we are keeping pipelines safe, how the public can interact with pipelines safely when they need to, and how we will interact with private landowners on pipeline projects in their area